



# ENERGY GARDEN JOURNEY WELCOME PACK



FOR RESIDENTS, COMMUNITY GROUPS & STATION MANAGERS



WHERE COMMUNITY GARDENING MEETS COMMUNITY ENERGY





# 1. WHAT IS AN ENERGY GARDEN?

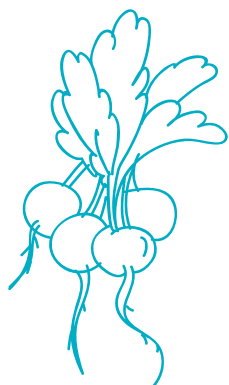
**Energy Garden is the world's first citywide combined community energy and gardening project. Over the next two years the Energy Garden team will be supporting communities across London to transform up to 50 London Overground platforms and stations into thriving Energy Gardens.**

Each Energy Garden will be unique to the people and to the area, allowing the creation of community gardening spaces and other greening measures, such as hanging baskets and vertical gardens, powered by solar water pumps, solar lighting and interactive solar community notice boards. Solar arrays with a combined capacity of 2 Megawatts will be installed on rooftops and brownfield sites. The income generated by these arrays will provide a revenue stream to support the ongoing maintenance of the gardens.

Our vision is to deliver far reaching social, environmental and economical benefits across London. We aim to create a sense of ownership and pride that will strengthen the interconnectedness of London's diverse communities while increasing environmental awareness across London.

Energy Garden is a partnership project delivered by Repowering London, Groundwork London and Transport for London, and is funded by the players of People's Postcode Lottery through The Dream Fund.

We are now accepting expressions of interest from local residents, community groups, commuters or local business owners who'd like to work with us to transform their local stations into an Energy Garden. We look forward to working with you on creating your Energy Garden. Welcome aboard! Please keep us updated on your progress and please spread the word through twitter, Facebook and other social media!



**Join the  
Energy Garden  
revolution!**

 [www.energygarden.org.uk](http://www.energygarden.org.uk)

 [info@energygarden.org.uk](mailto:info@energygarden.org.uk)

 [EnergyGardenLondon](https://www.facebook.com/EnergyGardenLondon)

 [@energygardenldn](https://twitter.com/energygardenldn)

**#greenmyoverground**



# 2. THE ENERGY GARDEN JOURNEY: STEPS TO CREATING YOUR ENERGY GARDEN

## community building

1 | NOMINATE YOUR LOCAL STATION  
THROUGH TWITTER OR OUR WEBSITE



2 | ENERGY GARDEN TEAM WILL CONTACT YOU  
TO SET UP A MEETING  
OR SITE VISIT



3 | MEETING AND SITE VISIT  
WITH YOU AND THE ENERGY GARDEN TEAM



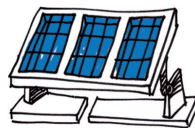
4 | WELCOME PACK PROVIDED TO GUIDE YOU  
THROUGH THE PROCESS AND OUTLINE  
THE SUPPORT AVAILABLE



5 | CREATE AND DEVELOP YOUR  
DRAWINGS AND IDEAS  
AND DISCUSS WITH THE ENERGY GARDEN TEAM



6 | REPOWERING LONDON  
WILL ASSESS ANY SOLAR  
OPPORTUNITIES WITH YOU



7 | ENERGY GARDEN TEAM PRESENTS  
INITIAL GARDEN AND SOLAR DESIGN  
SCHEME FOR YOUR REVIEW



8 | FINAL DESIGN DEVELOPMENT  
AND APPROVAL BY ALL PARTIES



## installation

9 | ENERGY GARDEN TEAM WORK WITH TfL  
TO SECURE ALL REQUIRED PERMISSIONS



10 | VOLUNTEER DELIVERY TEAM EMPOWERED  
AND SUPPORTED FOR GARDEN INSTALLATION



11 | WORK BEGINS ON CREATING  
ENERGY GARDEN



## post-installation

12 | PROMOTIONAL EVENTS AND GARDENING  
TRAINING SESSIONS SUPPORTED BY  
ENERGY GARDEN TEAM

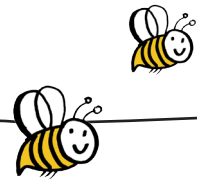


13 | JOIN AND PROMOTE THE SOLAR  
CO-OPERATIVE TO FINANCIALLY SUPPORT  
ENERGY GARDEN FOR 20 YEARS



14 | LAUNCH EVENT TO CELEBRATE OWNERSHIP  
OF YOUR NEW ENERGY GARDEN





# — HOW IS AN ENERGY GARDEN SELECTED? —

## ★ PEOPLE -----

Is there interest in the local community?

Can you demonstrate volunteer commitment?



## ★ SPACE -----

How big is the platform space?

What can be planted?

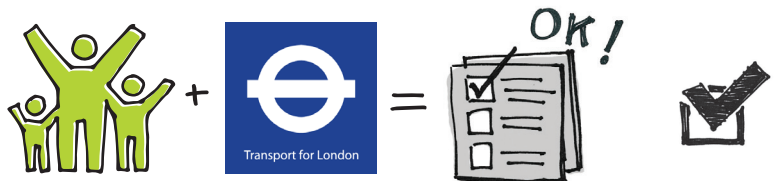


## ★ OWNERSHIP/ PERMISSION -----

Who owns the platform land?

Will permission be granted?

Are there any planning restrictions?



# 3. INTERNSHIP PROGRAMME

**Do you know of any young or unemployed people who might be interested in joining our community energy internship training programme?**

As part of the Energy Garden programme, Repowering London will provide a **50-hour internship programme** in renewable energy and community development skills for 20 young or unemployed people (16-24 year olds) from late Spring 2016.

**This will be a paid internship that delivers the skills and knowledge for people interested in working in the solar or community and voluntary sector.**

### Interns will specifically learn:

- **community renewables**
- **solar system design**
- **home energy efficiency**
- **community gardening**
- **food growing and composting**
- **sustainable water**
- **community engagement**
- **marketing and social media**
- **local economy and business models.**



The programme will include attending appropriate events or site visits to solar schemes and Energy Garden stations. Some relevant paid work opportunities also available.



## SCHEDULE

Taster sessions start in April 2016  
Full 50 hour programme in July 2016  
Please apply now to ensure a place!

### Contact us :

info@repowering.org.uk  
079608 29826



# 3. SCHOOL PROGRAMME

**Do you know a school or teacher who is interested in the Energy Garden plants and energy workshops linked to the curriculum?**

As part of the Energy Gardens Project located at a number of London Overground stations, we are offering 50 classroom-based workshops.

**Children will learn about solar power, electricity, plants, and urban gardening :**

### Lesson 1 - Plants

- \* An engaging lesson linked to 'living plants and habitats' in the curriculum
- \* Categorising plants, with real-life samples
- \* Interactive card game linked to learning outcomes
- \* Sow a seed to take home
- \* Plant a solar hanging basket
- \* Learn about urban gardening, watering, cultivating and categorisation.

### Lesson 2 - Solar Electricity

- \* A hands-on experimental lesson linked to science enquiry and electricity
- \* Creating circuits - how to make a buzzer buzz
- \* Experiments with solar panels
- \* Using solar energy to engage imagination
- \* Numeracy data collection, with graphs
- \* Learn about renewable energy with a fun and interactive lesson.



The programme also offers additional events and school trip ideas such as visits to solar schemes and Energy Garden stations.

## SCHEDULE

**Start Date: week commencing February 2016**

**End Date: week commencing December 2016**

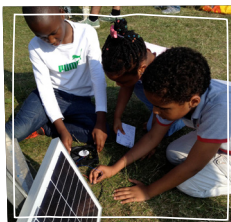


### Contact: Sophia Bromfield

Senior Projects Coordinator

020 8510 5421

sophia.bromfield@groundwork.org.uk



# 4. POSTCODE DREAM TRUST

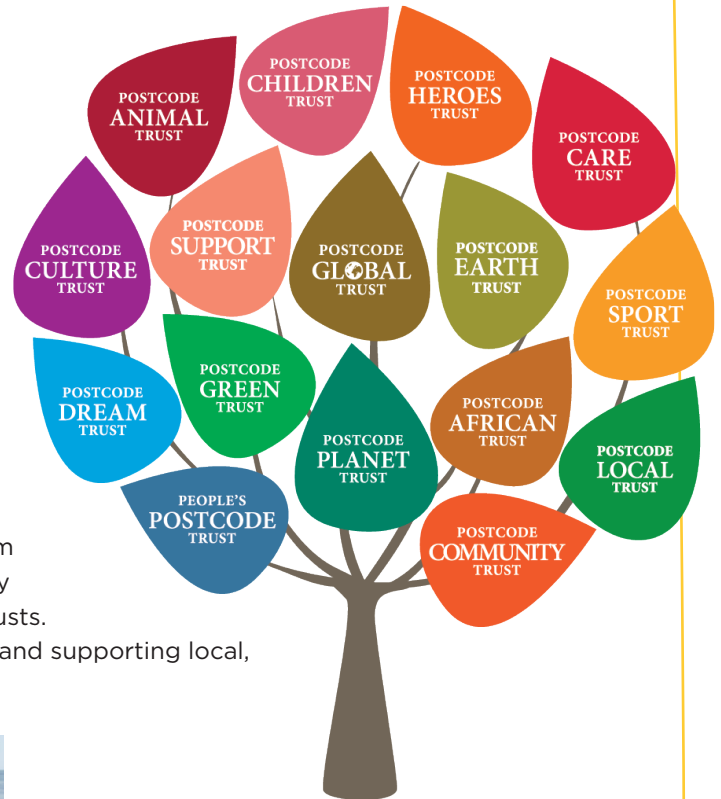


**Energy Garden was the winner of People's Postcode Lottery's Dream Fund in 2015 and was awarded £750,000 to deliver the project over the next two years.**

Postcode Dream Trust is supporting innovative collaborations to deliver short term, large-scale, innovative and impactful projects across Great Britain.

The Dream Fund gives charities the chance to deliver the project they have always dreamed of, but never had the opportunity to bring to life. Each year the Dream Fund asks charities in Great Britain to think big, be ambitious and collaborate with other not-for-profit partners to apply for funding to deliver their dream projects.

The Dream Fund is made possible entirely through funding from players of People's Postcode Lottery. People's Postcode Lottery manages multiple society lotteries on behalf of 16 charitable trusts. These trusts operate with the sole purpose of raising funds for and supporting local, national and international charities.



*Whole communities can win.*



*Energy Garden team accept their Dream Fund award.*

People's Postcode Lottery manages society lotteries on behalf of a range of charitable bodies. These lotteries support charities and good causes. Since launching 10 years ago players have raised over £104.2 million for more than 2,000 good causes. A minimum of 27.5% of the ticket price goes directly to charities.

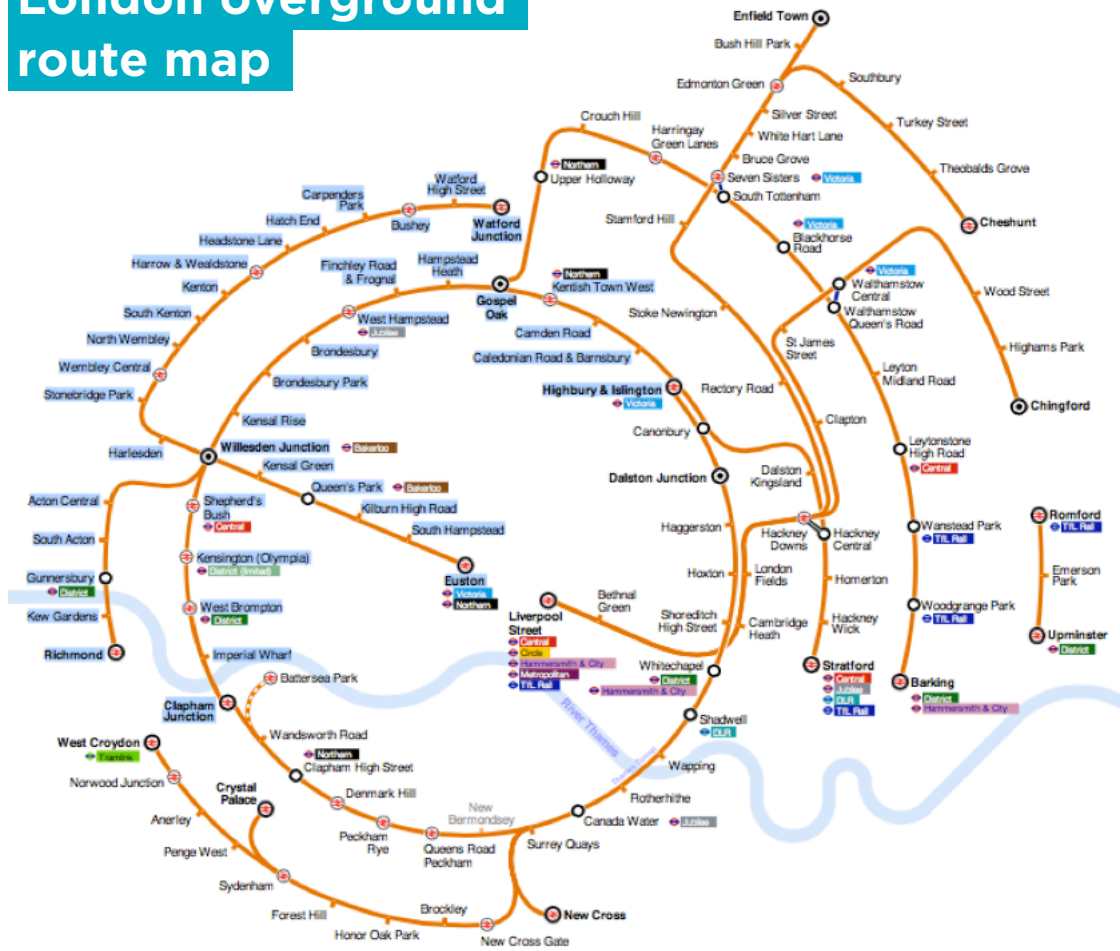


**To play People's Postcode Lottery visit [www.postcodelottery.co.uk](http://www.postcodelottery.co.uk) for your chance to be a winner and support great causes.**





# London overground route map



# 5. DO YOU KNOW AN ORGANISATION WHO WANTS TO GET INVOLVED?

## DIRECT SPONSORSHIP OF ENERGY GARDEN

Boost your corporate social responsibility credentials and become a valued Energy Garden partner by sponsoring a station, or the schools and internship programmes.



## PROVIDING TRAINING AND MENTORSHIP OPPORTUNITIES

Through the Energy Garden internship programme your business or organisation can provide training and mentoring opportunities for young people in communities across London.

## BECOMING A DIRECT INVESTOR IN THE SOLAR ARRAY

By investing in the share offer for the Energy Garden solar array your business can become a shareholder and receive an average 4% annual return of investment.

## PROVIDING ROOF SPACE OR LAND ASSETS

Your site, roof space or land area is an important asset that could help support this project whilst making you money and fulfilling a large number of high impact corporate social responsibility objectives. Our not-for-profit community benefit society will lease your land to house a solar array for 20 years. Full insurance and liability sits with Energy Garden.

There are two possible configurations for the solar installation:

### Ground Mounted Solar Panels

Ground mounted panels can be easily installed on brown field sites such as those around reservoirs, motorways and railway lines.



### Rooftop Solar Panels

Roof mounted panels can be installed on pitched or flat roofs, and will supply clean energy at reduced prices to the building owner.



**Would your organisation like to get involved with Energy Garden?**

**Please visit [www.energygarden.org.uk/opportunities-for-businesses](http://www.energygarden.org.uk/opportunities-for-businesses).**

**You can also contact us to request a business brochure and to arrange a meeting.**

NOTES:

---





---

FOR MORE INFORMATION PLEASE VISIT  
[WWW.ENERGYGARDEN.ORG.UK](http://WWW.ENERGYGARDEN.ORG.UK)  
OR EMAIL [INFO@ENERGYGARDEN.ORG.UK](mailto:INFO@ENERGYGARDEN.ORG.UK)  
FOLLOW US: [TWITTER.COM/ENERGYGARDENLDN](https://TWITTER.COM/ENERGYGARDENLDN)

---