



ENERGY GARDEN

WHERE COMMUNITY GARDENING MEETS COMMUNITY ENERGY

CONTENTS

What is an Energy Garden?	3
Aims and objectives	4
How does it work?	5
How will Energy Garden benefit your organisation?	6
How can your organisation get involved?	7
Roof or land lease journey	8
Sustainability	9
Funders	11
Contact us	12



Repowering London is a not-for-profit organisation that specialises in creating and delivering local sustainable energy projects. We support communities to develop, own and manage renewable energy projects that deliver social, environmental and financial returns back into the community.



Groundwork is a national charity that works with communities across the UK supporting them to create better places, live and work in a greener, more sustainable way and to improve their economic prospects.



"Since 2007 the London Overground network has opened up parts of London and become an integral part of the community. That's why we're delighted to be involved with the Energy Garden scheme and hope that our staff and customers will be inspired to share their ideas about "greening" their local station!"

Mike Stubbs

Director, London Overground



"By supporting communities to create self-sufficient Energy Gardens we will bring sound business sense and smart technology to gardening. Energy Gardens will allow all ages, cultures and socio-economic backgrounds to engage in greening our urban corridors, helping craft socially smart cities."

Agamemnon Otero MBE

Founder, Energy Garden
Chief Executive Officer of Repowering

Energy Garden has the support of the London Sustainable Development Commission, The London Mayoral Office, Transport for London and People's Postcode Lottery. Featured in The Guardian, the Evening Standard and on London Live TV.

WHAT IS ENERGY GARDEN?



Energy Garden is the world's first citywide combined community energy and gardening project. By engaging with local communities, landowners and businesses, the project aims to create a network of interconnected, community Energy Gardens at multiple rail stations across London's Overground line.

IT'S ABOUT CREATING GARDENS!

Each project will facilitate the regeneration of unused space on Overground rail station platforms. Each garden will be unique to the people and to the area, with the stations transformed into beautiful, green and ecologically rich spaces. Train platforms will become smart community gardens that can grow natural produce for sale at local farmers markets, thereby further supporting the maintenance of each project.

IT'S ABOUT CREATING ENERGY!

To support the gardens, solar water pumps, solar lighting and solar panels will be installed to generate clean, green energy and charge solar powered interactive notice boards with real time information about the project. Large-scale off-site solar arrays will also be established where surplus energy can be sold to generate a steady revenue stream to support the long term maintenance of the site and provide a return to investors.

Each Energy Garden will be unique, custom designed in collaboration with local people to reflect the community in which it is based.

IT'S ABOUT COMMUNITY!

The Energy Garden programme aims to create a sense of ownership and pride that will strengthen London's diverse communities by generating social, environmental, and financial returns. Energy Garden projects offer an innovative approach to promoting civic participation, community wellbeing and clean energy usage, as well as creating rich ecosystems within urban areas.

With the guidance of pioneering community engagement organisations Groundwork London and Repowering London, local people will be involved at every stage of the project development.

IT'S ABOUT YOUR ORGANISATION!

Energy Garden offers your organisation an exciting opportunity to be a part of our innovative community projects across London. By making land assets available for solar arrays, investing directly in projects or providing training and mentorship opportunities for young people, you can support these projects whilst also receiving benefits in return. In addition, there will be opportunities for your employees to get involved through workshops and skills based and practical volunteer days



AIMS & OBJECTIVES

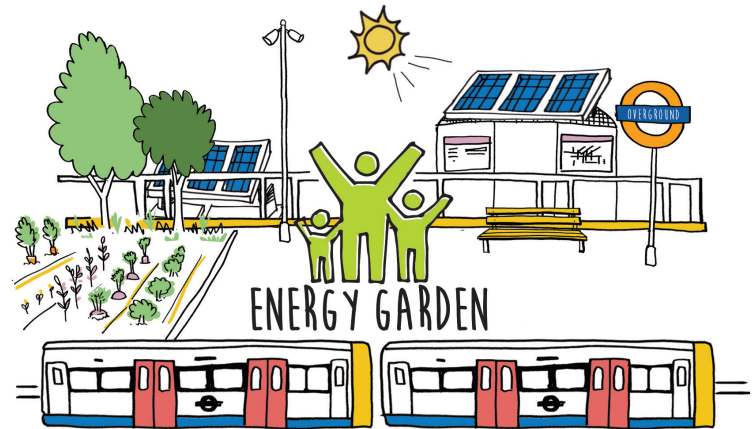
Energy Garden will:

- Touch the lives of **1,000,000 Londoners**
- Build **50 Gardens** adding beauty to London Overground Stations
- Empower **150 local people** to become Energy Garden champions
- Deliver **150 community gardening sessions**
- Formally train **100 people in horticultural skills**
- Host family fun days that will benefit **1000 people**
- Hold **50 school sessions** increasing awareness of renewable energy & community gardening
- Create **10 youth internships in Renewable Energy**
- Roll out **150 educational events**
- Support **15 jobs**

After 2 years, Energy Garden will become self-sustaining through the creation of a legacy fund generated by the sale of renewable energy. This fund will support the gardens and the coordination of Energy Garden Champions for the next 20 years.



With support of Players of the People's Postcode Lottery the first Energy Garden will be on the London Overground Rail stations.



WHERE COMMUNITY GARDENING MEETS COMMUNITY ENERGY

HOW DOES IT WORK?

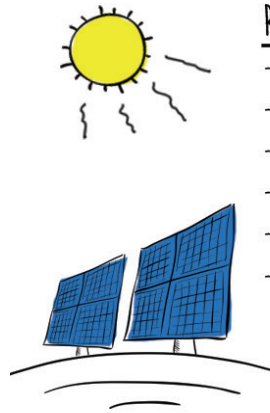
Each Energy Garden project will be self-sustaining through income generated by the sale of clean electricity from solar panels. This steady revenue stream will sustain the gardening projects by paying for seeds, plants, soil, materials, and coordinating staff for volunteer gardeners as well as administration, insurance, maintenance and general upkeep of the project well into the future.

THE COMMUNITY GARDEN

The gardening effort will be met using a combination of members of the local community, station staff and volunteer days from schools and business. The Energy Garden internship programme will also offer work experience, mentoring and paid training opportunities to local young people.

ENERGY BAR INTERACTIVE NOTICE BOARDS

Electronic notice board displays will be installed on selected sites, allowing Energy Gardens to communicate with one another and encourage further participation from the public. Each notice board will explain the site, its journey, the plants, produce, gardening sessions, and related events.



REVENUE PAYS FOR:

- MAINTENANCE
- VOLUNTEER COORDINATION
- INSURANCE
- SEEDS+PLANTS
- BEES
- BREWING



OUTCOMES:

- EDUCATION
- BEHAVIOUR CHANGE
- FOOD
- ENERGY
- HONEY
- BEER



HOW WILL ENERGY GARDEN BENEFIT YOUR ORGANISATION?

FINANCIAL

Businesses can become direct investors in Energy Garden projects via a share holding in the solar array and receive a 4% average annual return on investment.

- If your business has suitable land assets to provide space for Energy Garden solar panel installations, the cost of the solar array would be funded by the community share offer and you can receive direct supply of discounted renewable energy.
- There are potential tax relief advantages depending on your organisation. Please get in touch to discuss further.

PROMOTIONAL

The Energy Garden programme will be seen by 1,000s of Londoners every single day, giving your business a fantastic platform to associate your products and services to your target market. Brand exposure opportunities can be discussed.

ENVIRONMENTAL

Reduce the carbon footprint of your business by facilitating the production of clean sustainable energy.

Help to create green spaces and ecologically rich areas in the heart of London.

CORPORATE SOCIAL RESPONSIBILITY

- By supporting Energy Garden projects your business can develop an even deeper connection to the local community by supporting internships and training opportunities to develop local skills and talent.
- Staff team building and volunteering days on community projects, such as Energy Garden, have long been recognised to improve staff retention and motivation.
- Supporting Energy Garden will help your business to deliver its Corporate Social Responsibility objectives and receive recognition from the community.



HOW CAN YOUR ORGANISATION GET INVOLVED?

DIRECT SPONSORSHIP OF ENERGY GARDEN

Boost your corporate social responsibility credentials and become a valued Energy Garden partner by sponsoring a station, or the schools and internship programmes.



PROVIDING TRAINING AND MENTORSHIP OPPORTUNITIES

Through the Energy Garden internship programme your business or organisation can provide training and mentoring opportunities for young people in communities across London.

BECOMING A DIRECT INVESTOR IN THE SOLAR ARRAY

By investing in the share offer for the Energy Garden solar array your business can become a shareholder and receive an average 4% annual return of investment.

PROVIDING ROOF SPACE OR LAND ASSETS

Your site, roof space or land area is an important asset that could help support this project whilst making you money and fulfilling a large number of high impact corporate social responsibility objectives. Our not-for-profit community benefit society will lease your land to house a solar array for 20 years. Full insurance and liability sits with Energy Garden.

There are two possible configurations for the solar installation:

Ground Mounted Solar Panels

Ground mounted panels can be easily installed on brown field sites such as those around reservoirs, motorways and railway lines.



Rooftop Solar Panels

Roof mounted panels can be installed on pitched or flat roofs, and will supply clean energy at reduced prices to the building owner.



ROOF OR LAND LEASE JOURNEY

We will maximise the value of your underused land or roof space, installing a solar power station that will create benefits for your organisation and an ongoing legacy for Energy Garden.

Phase 1 - First contact:

Set up an initial meeting with Energy Garden team to discuss:

- Solar-suitable assets
- Potential energy bill savings
- Corporate Social Responsibility opportunities

Phase 2 - Preparation:

Agree:

- Heads of Terms
- Land/roof access and lease agreements
- Power Purchase Agreement
- Health and Safety plan
- System insurance and Ongoing Maintenance and Management

Phase 3 - Delivery:

- Agree financial, legal and technical delivery plan
- Support promotion of community share offer to pay for solar installation
- Option to invest
- Solar system installed and commissioned

Phase 4 - Legacy:

- Energy bill savings – quarterly payments for discounted electricity used on-site
- Ongoing association with Energy Garden and Corporate Social Responsibility opportunities
- Return on investment.



SUSTAINABILITY: AT THE HEART OF ENERGY GARDEN

We have developed a sustainability plan for Energy Garden in order to ensure the programme's longevity and maximise the economic, social and environmental benefits created.

ECONOMIC

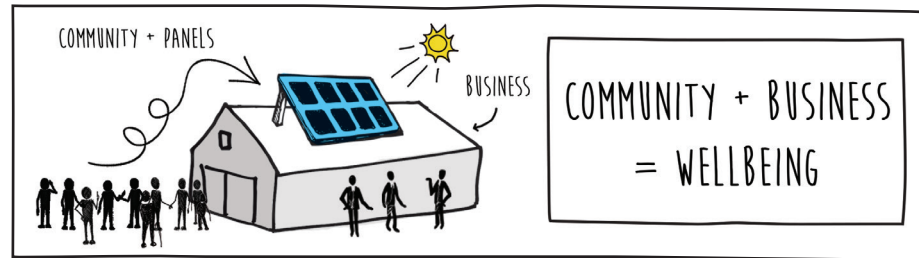
- Social enterprise established to facilitate a legacy fund
- Income received through the government's Feed-in Tariff and the sale of solar electricity will create an ongoing revenue stream for the 20-year life of the project
- In addition to paying back investors and providing discounted electricity to land and business owners, this income will be used to recruit paid Volunteer Coordinators and support community groups to manage their Energy Gardens
- Ongoing support through matchfunding from corporate sponsors.

SOCIAL

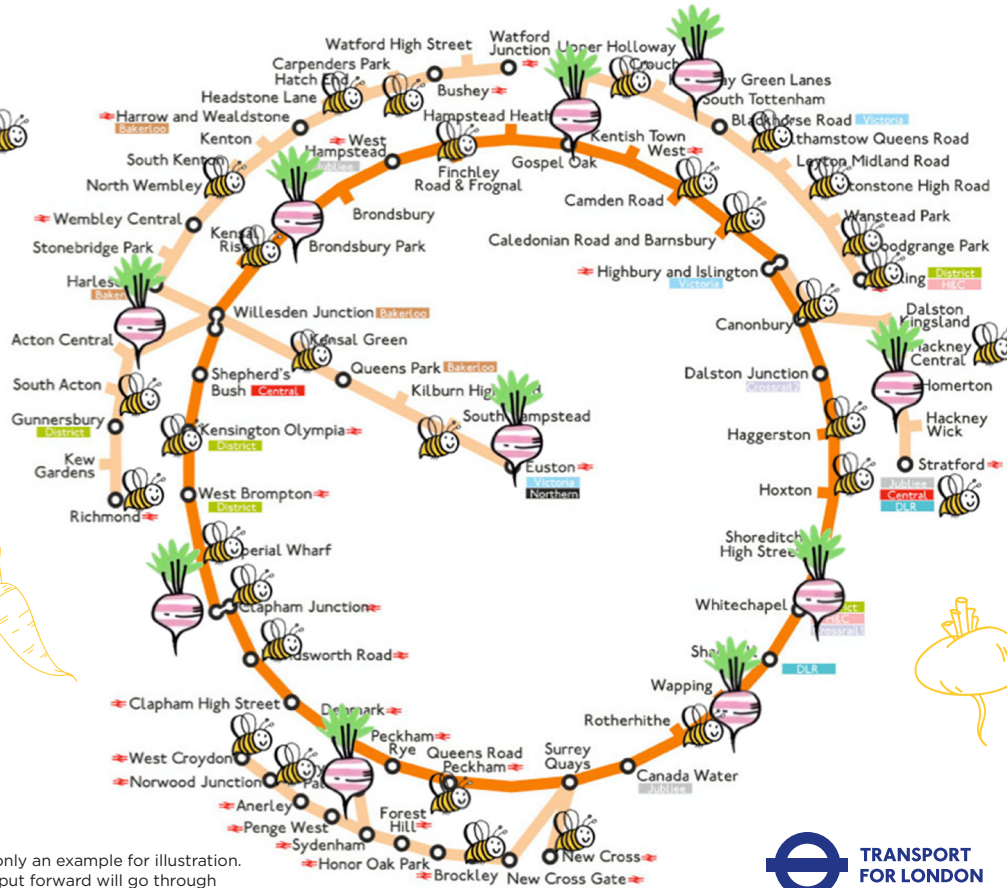
- Creating employment opportunities
- Schools and internship programme
- Promoting health and well being
- Increasing community cohesion
- Empowering community groups and Station Managers to design, deliver, promote and maintain Energy Gardens at Overground stations
- Informing and engaging the public with interactive 'Energy Bar' noticeboards on stations
- Corporate Social Responsibility opportunities.

ENVIRONMENTAL

- Generating clean renewable energy
- Reducing carbon emissions
- Enhancing air quality
- Promoting and enhancing biodiversity
- Improving availability of local food
- Creating green spaces.




ENERGY GARDEN: POWERING AN EDIBLE OVERGROUND




- PROPOSE A STATION
- Which would you put forward?*
- NOMINATE
- #greenmyoverground
- EMAIL
- info@energygarden.org.uk

* this is only an example for illustration.
All sites put forward will go through a panel with partners.

MAP KEY



full or deep station refurbishment



gardening support



POSTCODE DREAM TRUST

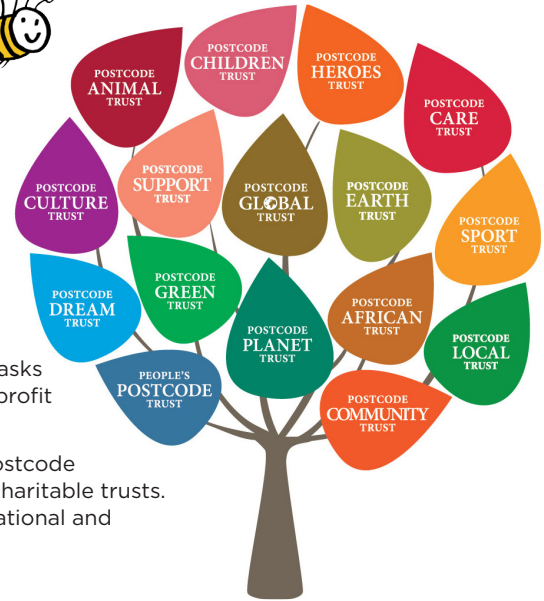


Energy Garden was the winner of People's Postcode Lottery's Dream Fund in 2015 and was awarded £750,000 to deliver the project over the next two years.

Postcode Dream Trust is supporting innovative collaborations to deliver short term, large-scale, innovative and impactful projects across Great Britain.

The Dream Fund gives charities the chance to deliver the project they have always dreamed of, but never had the opportunity to bring to life. Each year the Dream Fund asks charities in Great Britain to think big, be ambitious and collaborate with other not-for-profit partners to apply for funding to deliver their dream projects.

The Dream Fund is made possible entirely through funding from players of People's Postcode Lottery. People's Postcode Lottery manages multiple society lotteries on behalf of 16 charitable trusts. These trusts operate with the sole purpose of raising funds for and supporting local, national and international charities.



Whole communities can win.



Energy Garden team accept their Dream Fund award.

People's Postcode Lottery manages society lotteries on behalf of a range of charitable bodies. These lotteries support charities and good causes. Since launching 10 years ago players have raised over £104.2 million for more than 2,000 good causes. A minimum of 27.5% of the ticket price goes directly to charities.



To play People's Postcode Lottery visit www.postcodelottery.co.uk for your chance to be a winner and support great causes.



EXPLORE WWW.ENERGYGARDEN.ORG.UK | FOLLOW US @ENERGYGARDENLDN
 TO FIND OUT MORE PLEASE CONTACT: INFO@ENERGYGARDEN.ORG.UK | 07960829826



Illustrations by Kate Rochester
 and Dorothée Oliveiras
 Design by Dorothée Oliveiras

